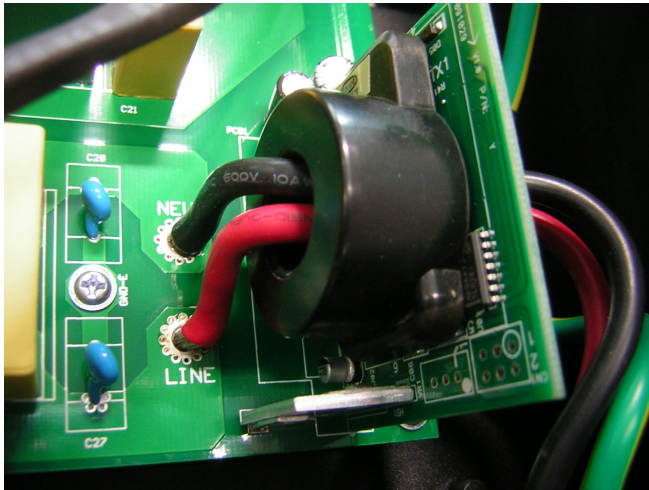


Updating the BlueSolar Grid Inverter

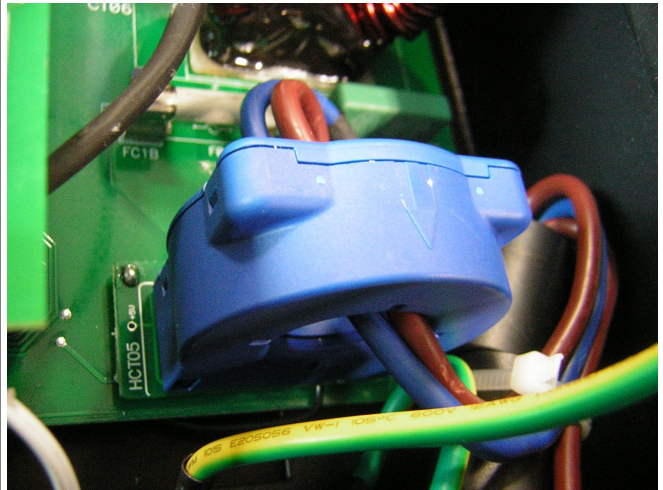
Download Updater software and unpack it on your computer
Install the updater program.

Before you start, first check what version firmware you have now. If you don't know because previous updates did not succeed, check the GFCI (Ground Fault Circuit Interrupter) sensor inside the Inverter. Inverters with a black GFCI sensor must have firmware starting with 8. Inverters with a Blue GFCI sensor must have firmware starting with 5

Black GFCI must be programmed with V8.05



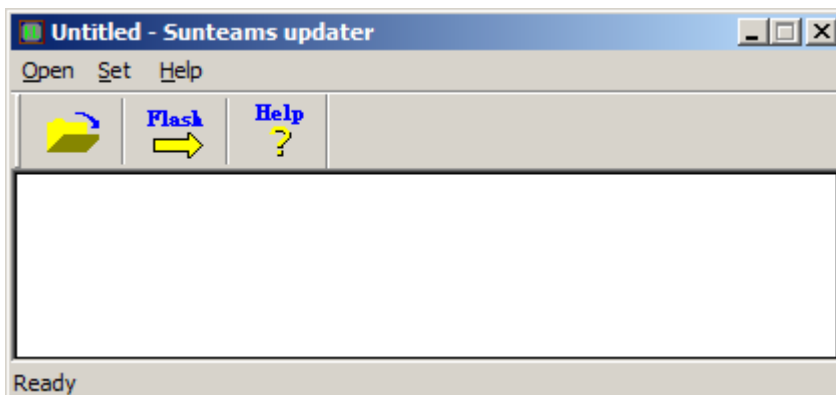
Blue GFCI needs Firmware V5.03



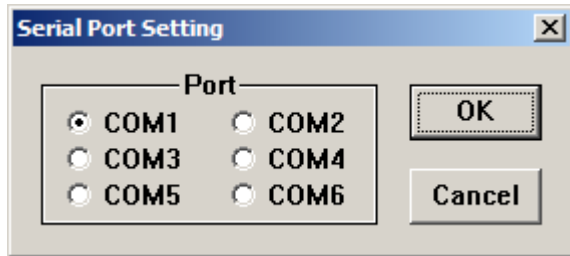
Firmware 8.05 is for older devices and there will no new releases.

Do the following steps:

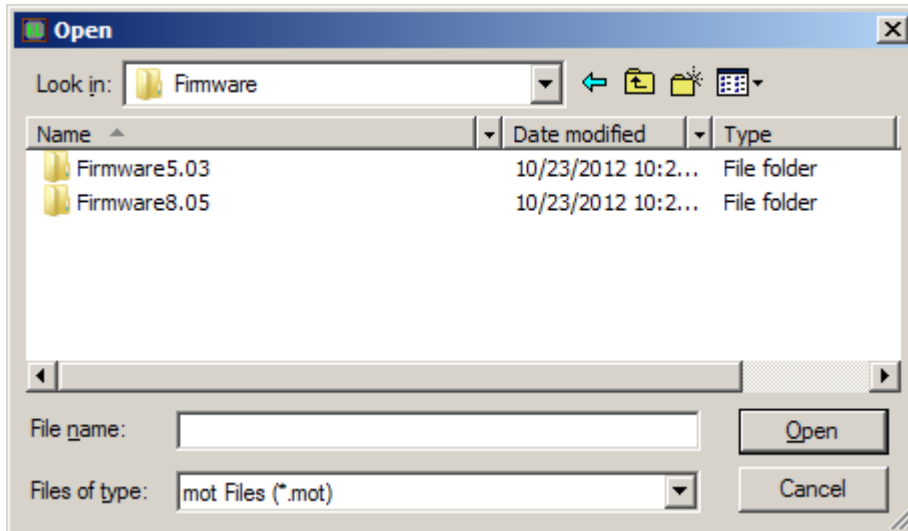
- 1 Connect you PC with an RS232 cable to the Grid Inverter.
- 2 Make sure there is enough solar power (>30W) and the inverter is ON.
- 3 Start the updater program.



4 Select the correct COM port were the Grid Inverter is connected on by clicking on “SET”.



5 Click on file open to open the firmware that needs to be flashed.



After opening the folder of your choice you find 4 files:

SV4KA_1k5...mot	1500W model
SV4KA_2k3k...mot	2000W and 3000W model
SV4KA_4k...mot	4000W model
SV4KA_5k...mot	5000W model

6 Click on “Flash” and wait.

7 After Flashing Firmware V8.05 you might get the message “EEPROM DAMAGED” on the display, you need to reset the Grid Inverter by disconnecting the solar input and re-connect after the display has gone out.

8 Check the settings of the Grid Inverter with the Data Control Center program.